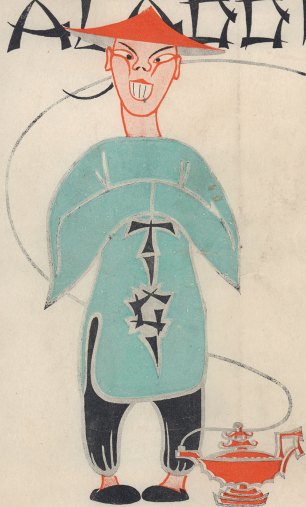


# ALADDIN



P  
R  
O  
G  
R  
A  
M  
M  
E

Spend no money on Luxuries

Save

For the Future

A National appeal by the

National War Front



## OUR GIFTS SERVE

As a link between you and  
your dear ones at home.

# VICTORY JEWELLERS

ELPHINSTONE STREET,  
KARACHI.

## TAILORING

We earnestly solicit the  
trial to prove that at  
H. A. Karim, you can  
get the best Tailoring  
value unsurpassed  
elsewhere.

**H. A. Karim & Bros.**

Leading Civil and Military Tailors  
Elphinstone Street, KARACHI.



In Bounds  
To all ranks.

*Good Food*

WELL COOKED FOOD  
COURTEOUS SERVICE  
REASONABLE PRICES  
COMBINE IN MAKING THE

**MEXICANO**  
KARACHI'S SMARTEST  
RESTAURANT  
ELPHINSTONE ST. KARACHI

Where every meal is a pleasant memory, attractive lounge-The rendezvous for  
Coffee Comfort and Gales.

TAILORING

We earnestly solicit the  
trial to prove that at  
H. A. Karim, you can  
get the best Tailoring  
value unobscured  
elsewhere.

OUR GIFTS SERVE

As a gift between you and  
your loved ones in London.

VICTORY  
JEWELLERS

**BLISS & CO.**  
THE CHEMISTS  
KARACHI.



WELL-COOKED FOOD  
COURTEOUS SERVICE  
REASONABLE PRICES  
CONCORD IN HANDING THE  
RIGHT AT  
KARACHI, EARTEST  
ELPHINSTONE ST. KARACHI.

# HAMID and BROS.

CAMP SHOE MAKERS

Leather Goods

of

Finest Quality

R. A. F. DRIGH ROAD.

Khan Sahib  
Hajee M. Fazel Elahi Jewaharishi J.P.  
(Master of Customs Contractors London)  
**ARMY & R. A. F.**  
Contractors,  
Commission Agent & Landlord.  
R. A. F. Station—  
DRIGH ROAD  
Tele. HALKINUR.  
9155. KUBANDI CREEK  
CLIFTON  
(Manager D. N. Khan).

This space kindly donated by:

## GRAHAMS TRADING Co. (India) Ltd.

Merchants and Agents for:

BRITISH MINISTRY OF FOOD

Asiatic S. N. Coy., Ltd. Nagai Line Ltd. Norwich Union Life Insurance  
Society. Norwich Union Fire Insurance Society. London Lancashire Fire  
Insurance. Triton Insurance Co., Ltd. Atlantic (East) Ltd. Bond & Co.,  
Ltd. Rowntree & Co., Ltd. A. Wandler Ltd. etc.

# SAVE FOR VICTORY

ROLL YOUR BLUES  
AWAY  
AT THE  
**MAYFAIR**  
—  
THEN EAT  
OUR  
SPECIALITIES  
IN  
KARACHI'S KOSIEST KAFE

**RALLI BROS.**

WOOD STREET

KARACHI.

SAVE FOR  
**VICTORY**

BRITISH  
WAA  
SAVINGS  
MOVEMENT

SPACE DONATED BY

Forbes, Forbes, Campbell & Co. Ltd.

6

**BUY**

SAVING CERTIFICATES  
DEFENCE BONDS  
INTEREST FREE BONDS  
-STERLING OR RUPEE-

REGULARLY

**ACKNOWLEDGMENT**

The Royal Air Force, Drigh Road  
wish to express their gratitude to  
Mr. J. J. MOBED, for putting the  
Ball Room of the Paradise Cinema  
at their disposal, free of charge for  
rehearsals.

THIS SPACE KINDLY DONATED  
BY

**CARSTAIRS & CUMMINGS LTD.**

7



**MANHATTAN**

**SODA FOUNTAIN**

Manhattan soda fountain

And ice cream bar

No-one to compare both near or far

Highest quality and service quick

Atmosphere dignified open and spick

Tonight come and taste dinner so grand

To-morrow holding your best girl's hand

All the latest records you like

Now come on foot, or come on your bike.

# LINENS

FOR HOUSEHOLD

WE SPECIALISE IN  
TOWELS-NEDSHEETS-TABLECLOTHS  
BREAKFAST CLOTHS-THARANS-  
NAPPINS-FURNISHING FABRICS-  
MATTRESSES-PILLOWS-PILLOWSLIPS  
MOSQUITO-NETS-TRAYELLING-NITS  
BLANKETS-DAMASK-TABLE LINEN-  
SERVANTS CLOTHING-BEDDING

ROLLS-EGG. EGG. EGG.

Contractors to ROYAL AIR FORCE

**Samuel Fitze & Co., Ltd.,**

HOUSE OF RELIABILITY

Victoria Road, Opp. Parade  
KARACHI (Sindia)

WHY NOT TRY—  
**RODRIQUEZ**

"RAPHAELO"

**CORONA**



Cynthia D'Souza

as

Princess Sa-Shi



Betty Greenbush

as  
Aladdin



The Chinese Policeman



Wishes, Wishes &  
Widow Twankey.



Emperor &  
Grand Vizier.



CHORUS.



Genl of the Lamp &  
Spirit of Ring



Maid of Honour &  
Princess So-Shi.



Devan King &  
Ebanser.

By appointment to  
Sir Laurence Graham K.C.S.I., K.C.I.E.  
FORMER GOVERNOR OF SIND.

Estd. 1908 Opp. B.U.S.S. & Co.

## ENGLISH WATCH Co.

CHRONOMETER MAKERS.

JEWELLERS ENGRAVERS.

Elphinstone Street,  
KARACHI.

ALL RANKS  
OF  
ALL FORCES

COME TO

## ARMY DYERS & CLEANERS.

ILACO HOUSE  
Victoria Road, KARACHI.

FOR

DRY CLEANING :

LAUNDRY :

& DYEING :

## MACKWIN & Co. KARACHI.

MOST UP-TO-DATE & POPULAR  
BOOK-SELLERS  
STATIONERS  
& NEWSAGENTS.

Under the Patronage of  
KARACHI GYMKHANA  
SIND CLUB  
& KARACHI BOAT CLUB.

Inverarity Road, Opp. Elphinstone St.

## NARAINDAS & Co.

GARDEN ROAD, KARACHI.

ALL OUR  
EFFORTS ARE  
STRESSED IN



# WORKING FOR VICTORY

BUT ... IN PEACETIME, WE WILL  
PLACE BEFORE YOU AGAIN THE BEST  
... CHEVROLET ... BUICK  
VALHALL & AUSTIN



Eliminates  
Infects  
Prevents  
Swellings  
&  
Goes

*Remember*

WE GUARANTEE your satisfaction  
with each purchase subject to  
valuation from experts.

## INDIAN ARTS

Shop No. 44 Jeweller & Cash Dealers,  
ELPHINSTONE STREET

## MELWANI NOVELTY STORE

*Invites you to*

**VISIT OUR SHOP**  
WE ARE SPECIALISTS IN :

Drawings, Ivory, King-Of-the, London  
Sarcophagi, Bejewels, Talismans, Magic  
made Jewellery and Fancy Goods

ELPHINSTONE STREET,  
KARACHI.

## MALARIA

(35 mm Sound Film in 3 Reels)

A NEW Shell Film Unit production,  
which explains, by means of dia-  
grams, cinematography and scenes  
photographed in India and the  
tropics, how human beings contract  
malaria and what measures can be  
taken to control the disease.

Part One: THE PARASITE

Part Two: THE CARRIER

Part Three: MALARIA CONTROL

The film was made in close collabo-  
ration with the London School of  
Hygiene and Tropical Medicine and  
has been recommended by the  
Commissioner of Public Health,  
Government of India to Public Health  
Officials throughout India. It is  
included in BURMAH-SHELL'S  
LENDING LIBRARY OF FILMS and  
is available free of charge for edu-  
cational or private view and for use  
in health propaganda.

Burma-Shell's Film Library covers a  
number of subjects of general and  
scientific interest. For the loan of  
35 mm and 16 mm films, please  
apply to :-

**BURMAH-SHELL**  
PUBLICITY DEPARTMENT,  
KARACHI.

BY KIND PERMISSION OF GROUP CAPTAIN

N. C. S. RUTTER

ROYAL AIR FORCE DRIGH ROAD

PRESENTS

FOR YOUR ENTERTAINMENT

# ALADDIN

AND HIS WONDERFUL LAMP.

Book by  
Tony Eschells  
Cliff Edmonds  
Dave Holton

Music selected and arranged by  
Roy Pearce & R. C. Noel-Johnson

Lyrics and special musical numbers by  
E. C. Noel-Johnson

Produced by

**WILLIAM STARR**  
In Aid of

R. A. F. Benevolent Fund.

Bengal Distress Fund.

at DRIGH ROAD

8th, 7th, 6th January at 9 p. m.

at PALACE THEATRE

11th, 12th, 13th January at 9 p. m.

Matinee 12th January at 3 p. m.

THIS SPACE KINDLY DONATED BY AKBARALI.

# Player's Please

## Programme.

### CAST

Aladdin	Berry D'Oroville
Princess So-So	Cynthia D'Souza
Wisee Tweeney (Aladdin's mother)	Bob Ashurst
Wisee-Wisee	Alan Ireland
Emperor (The wicked uncle)	Kim Pattison
Emperor	Tom Fotherby
Grand Vizier	Stuart John
Head of Palace	Maria D'Souza
Genie King	Bob Bernick
Genie of the Lamp	Tony Hepworth
Spirit of the King	Edie Rolfe

Johnnie Hayward Trevor Francis

44

The Chinese Followers come from the

THREE CHINAS

George Harvey, Arthur Clarke, Walter Parker

### CHORUS.

Kia Finta, Aggie De Souza, Violet David

Edith D'Mello, Nania Fialho, Ana Fernandes, Teresa Fernandes

Bernice Maquette, M. Windcliffe, J. Lavrenson, J. Gregory, F. Spencer

E. Caddy, A. Leys, J. Brooks

Additional Dialogue by

Johnnie Raw, Trevor Francis, Stuart John

Scene One	Palms Market Square
Two	Outside The Enchanted Cave
Three	Inside The Enchanted Cave
Four	Outside The Enchanted Cave
Five	Wisee Tweeney's Laundry
ACT 1	
ACT 2	
Scene One	Hall in Emperors Palace
Two	Corridor in Aladdin's Palace
Three	Wisee-Wisee's Clinic
Four	Corridor in Aladdin's Palace
Five	Reception Hall in Aladdin's Palace

### GOD SAVE THE KING

Stage Director	Ray Smart
Jack Corner	Assistant Stage Manager
Business & Publicity Manager	Cyril Rogers
Cliff Edmunds	

Stage Carpenters  
Electricians & Sound

Stage Mechanics

Scenery Designed by

Wardrobe

Costumes Designed by

Costumes Executed by

Make-up

Posters & Programme Cover

Photography by

Jimmy Ferris, Gordon Brown

Colin Walker, Syd Oliver

Ray Lewis, Ron Clarke, Les Rhodes

Ted Hawkins, Charlie Davies

Bobbie Walker

John Moore, Bob Bell

Les Cowling, Les Lane, Alfred Chenagla

Edie Rolfe, Fred Garner

M. Jaldin & Bros.

Ray Barwick

E. E. Lang, G. Williamson

THIS SPACE KINDLY DONATED BY  
THE SUND TIMBER WORKS.



**PROGRAMME OF MUSICAL NUMBERS.**  
**ACT 1**

SCENE 1

1. (Chorus) "Market of Fakin"
2. (Aladdin) "Wardrobe one"
3. (Chinese Policemen) "We're in trouble"

SCENE 2

4. (Jewell King) "I'm The Jewell King"

SCENE 3

5. (Cave Scene) Incidental Music & Dance

SCENE 4

6. (Widow Tearing) "Put your worries (Wishes, Wishes) through the Hangle"

**ACT 2**

7. (Entrance) Eastern Dance

All Except Nos. 3, 5, 8, 10 & 14, specially composed by R. C. Noel-Johnson.

Orchestra under Direction of  
R. C. Noel-Johnson.

Vocal: George Durr; Trumpets: Ted Teather; Bass: Ronnie Fergally  
Clarinet: Jack Spencer; Jack Stringer; Ronnie Lacombe; Drums: Leo Sargent.

At the Piano.

Ray Pearce & Stan Fairchild.

Orchestration by  
Ted Teather & Phil Isaac.

VISIT  
**COLOMBO STORES.**

FOR QUALITY GOODS  
BEST VALUE  
&  
SERVICE.

LARGEST STOCKIST OF  
CEYLON GEMS, JEWELLERY  
& ARTS CURIOS



THIS WEEK...  
OR ANY WEEK...  
IF IT IS AT



**PARADISE**

IT IS THE  
BEST SHOW IN TOWN!

Here are some of the pictures

You will soon see at this theatre.

**MICKEY ROONEY**

in *M-G-M's*

**"THE HUMAN COMEDY"**

W. ROBERT RAUBEN'S

**"MOON AND SIX PENCE"**

BETTE DAVIS

in Warner Bros.

**"NOW VOYAGER"**

Charles Bowey - Jess Fontaine in

**"CONSTANT NYMPH"**

M.G.M.'s Technicolor Musical

**"DUBARRY WAS A LADY"**

NELSON EDDY &

**"PHANTOM of the OPERA"**



Operated by  
Amey Limited, 10  
R. L. A. Road  
at  
Royal Air Force  
**R. P. ROACH**  
KARACHI  
OFFICIAL LIC.  
CINEMA, Etc.  
Clean Appear-  
ance guaranteed  
by appointment to  
the authority

**IMPORTANT**

Only by the advice of your qualified  
optician and experience in the handling  
of visual defects can proper lenses be  
obtained for correction of defective sight.

The procurement of suitable glasses and  
the most accurate adjustment is essential  
to secure comfort.

Our Spectacles and Eye Glasses are dis-  
tributed only through our sole agents, individual.

We Supply and Clean Spectacles,  
Telescopes, Etc.

**ARMY NAVY & R. A. F.**

Uniforms by

**BEAUFORTS**

ELPHINSTONE STREET  
KARACHI  
ALSO AT BOMBAY

THE  
**BRITISH TOYS  
&  
NOVELTIES STORES**

ELPHINSTONE STREET  
FOR  
QUALITY GOODS  
TOYS:

GAMES:  
NOVELTIES:

**MANCHESTER HOUSE**

**MILITARY  
TAILORS**

ELPHINSTONE STREET  
KARACHI.

The Leading Manufacturing  
Jewellers in Western India.

**J. Manikrai & Sons,  
JEWELLERS,  
Camp, Karachi.**

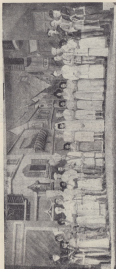


Holders of the Highest  
Awards Conferred on any  
Silver Jeweller.



DRY CLEANING IS A WEAPON TOO  
It protects clothes from rustling, wear and helps  
prevent stains, which is the essential reason of a  
soldier's "WASH".

TRY IT TODAY  
**Elphinstone Dyeing & Cleaning Co.**  
Army Launderers & Dry Cleaners  
ELPHINSTONE STREET



ENSEMBLE



BACK STAGE PERSONNEL



S. Fakhreddin (President), C. Edwards (Publisher),  
R. C. Noel Johnson (Medical Director),  
W. Starr (Producer), R. Pearce (Director)



AUTHORS

Tel. No. 7630

Exquisite  
articles for  
LADIES  
CHILDREN  
&  
Household  
use

**COWASJEE & VIRBAJEE VARIAWA**

Parsi Ladies Industrial Home

PREEDY STREET

KARACHI

(Charitable Institute)

Premier House for English, Swiss, French and Indian  
Embroideries.

Tailoring Department for Ladies and Children.

ORDERS TAKEN FOR  
FLAGS—BRASSARDS—CHEVRONS—INSIGNIAS  
FOR  
ANYTHING & EVERYTHING  
AT  
REASONABLE RATES.

Tel. -JINOU-

Large  
Stocks of  
Variety  
of  
presentation  
Articles  
always ready



FOR CENTURES THE BLUE BIRD  
HAS BEEN A SYMBOL OF  
HAPPINESS AND SATISFACTION—  
IT STILL IS!!

COME ALONG AND SEE  
BY DINING AT THE  
**BLUE BIRDS CAFE**

Inverarity Road, KARACHI.

**M. JALALDIN & Bros**

CAMP TAILORS

R. A. F. DRIGH ROAD

CANTON CONTRACTORS

AR H. G. NEW DELHI

R. A. F. CAMP MALIB

### ACKNOWLEDGMENT

The Royal Air Force Drigh Road  
wish to express their gratitude to  
Mr. L. C. SITLANI Proprietor of  
Palace Theatre for putting his  
theatre at their disposal.

THIS SPACE KINDLY DONATED BY

**VOLKART BROTHERS**  
ENGINEERS  
KARACHI

BY APPOINTMENT TO HIS EXCELLENCY  
SIR LANCELOT GRAHAM  
P.C.S.I., C.C.E.

CATERING  
AND  
CONFECTIONERS  
Phone 5200

*Continental*  
**Café Grand**

VICTORIA RD.  
KARACHI

CAKES - LARGE & SMALL  
A VARIETY OF SWEETS  
MADE FRESH DAILY

## CONTINENTAL FURNISHING Co.

European Expert Designers and  
Manufacturers of Up-to-Date Furniture.

Speciality - Complete Interior Decorating and  
Furnishing of Bungalows and Flats.

Telegrams - CONENTAL  
Telephone - 7666.

ILACO HOUSE,  
VICTORIA ROAD.

On I.S.D., C.R.E., R.A.F., N.W. Ry., & Govt. Lists

## AMEEJEE VALEEJEE & SONS

(Established 1867)

Engineers, Merchants & Govt. Contractors

OFFICE:

Mercantile Chamber,  
Bander Rd. Karachi

WORKS:

KEAMARI &  
BAGDADI

MANUFACTURERS OF

Bolts, Nuts & Rivets and all kinds of Engineering tools  
such as Box Spanners, Fixed Spanners, Ratchet Spanners  
etc. etc. etc.

**THE DOCK ENGINEERING & WELDING WORKS**

Welders, Ship Repairs, Machinery and Structural Works  
and Manufacturers of all Steel Articles

WORKS: KEAMARI, KARACHI.

# YOU CAN RELY

ON

# "TOM THE PAINTER"

FOR ALL YOUR

PAINT REQUIREMENTS

**PINCHIN, JOHNSON & Co. Ltd.**

(INCORPORATED IN ENGLAND)

LONDON

1, CLIVE ROW  
P. O. BOX 440,  
CALCUTTA.

EXCHANGE BUILDING  
BALLARD ESTATE,  
BOMBAY.

Karachi Representatives

**FLEMING, SHAW & Co. Ltd.**

ALLIES  
BATTERY

&

VULCANISING  
SERVICE

BUNDER ROAD

BENEFIT SHOW

FOR

R. A. F. BENEVOLENT FUND  
DRIGH ROAD

"HATTER'S CASTLE"

ON

Saturday 8th January at 9-30 p.m.

AT

CAPITOL THEATRE

Usual Prices!

Book Early!

---

BENEFIT SHOW

FOR

R. A. F. BENEVOLENT FUND  
KORANGI CREEK

'CAPTIVE WILD WOMAN'

ON

Tuesday 8th February at 9-30 p. m.

AT

CAPITOL THEATRE

USUAL PRICES!

BOOK EARLY!

**Contractors to the Government of India,**

I.S.D., C.R.E., R.A.F., P.W.D., I.M.D., K.P.T. etc.,

# SIND SAW MILL

**Palm Street, Lawrence Road, Karachi.**

Building construction, Modern Furniture, Technical  
Fittings, Ladders, Camp and Folding Furniture  
Office Furniture etc ,

At present engaged in DEFENCE WORK.

## **INTERNATIONAL TRADING SYNDICATE,**

Palm Street, Lawrence Road, KARACHI.

*Suppliers, of all materials.*

**Ganesh. M.**

*Manager.*