

SECOND J. LAW
LOG BOOK

June 11th 1939.

I am fully satisfied with the behaviour of Second's Law and Denton
and with the condition in which they have left my land.

(signed)

T. H. S. Platt

LOG of JOURNEY

TO

CHARING FROM

ASHFORD via HOTHORPE

LITTLE CHART.

MADE BY

SECOND'S LAW & SECOND W^m DENTON

ON

SATURDAY & SUNDAY JUN 10th - 11th

Working to F.O.S. map sheet 12b

MAP REFERENCES in right hand margin.

ROUTE MAP AT BACK

with
List of R.E. MEMO etc.

*Notes should be in
BLOCK CAPITALS.
Not a criticism of
hand writing but
clearing ground
against mistakes
R.W.L.*

Saturday June 10th

Time

Mileage

2.30 p.m. Left home at 2.30 with Bill
Deaton and proceeded ~~back~~ up
East Hill - through the high street
on to the ~~MAIDSTONE~~ ^{MAIDSTONE} Road. ~~MAIDSTONE~~
Where we took the first second (S.W.).
Turning past the Catholic church
and proceeded down a lane
surrounded on either side by a
fields. Went over the stone bridge
and heard a train coming in the
distance - and so on past two
black and one ^{horse} brown horses standing
close to a farm. Looked down

St. 1

Down past Repton Manor - an old
house with Elizabethan windows
and tall stately chimneys and so
on down the bank - past a dead
tree standing in front of some farm

1 1/2 miles

buildings on the S.W. side of
the track. The weather was hot
as we set out with a fair
breeze blowing, and it was now
quite cool under the dense chestnut
trees which shaded us from the
sun. We then passed through a
gate into a field in which were
a few recently shorn sheep and
lambs. The pleasant scene was
spoiled by a lot of broken pieces
of fence and a big tin drum
which had been thrown in a ditch.
We went on into the next field
where we heard the cuckoo. This
field was roughly ploughed and
we passed through it over under
some telegraph wires. To the
S.W. was seen an apple orchard

and in the distance to the NW we
saw woodlands. We soon passed a
few chickens near which were on
our track. The woods were mainly
mixed but we passed one big oak
which was near the path and near
it grew some blackberry bushes (no
blackberries of course!) Our path now
went across a ploughed field in
which grew many chistles. The woods
thickened as we entered the gate
leading into ^{COBLENCE} Johannston Park. Where
the District commissioners' shield
competition is held.

2 1/2 miles.

2.147

7.30 pm.

We then crossed the field and
passed through the iron gate
and went on the drive leading
to the house, ^{and} we then walked
in a N.W. westerly direction through

a field which contained no animals but - as we noticed - was dotted with tree stumps (they had been taken close to the ground). A plantation of young trees was growing on the SW. side of our path, and we soon found ourselves walking nearly parallel to a secondary road which goes from Potters Grove to Northfield and we soon found a small stile leading on to the road along which we walked for some time. On each side of the road there a wood was growing and along the banks grew some "wild rose" and "wild maid". The woods then led to some to one end and in place was a meadow in which were some

1 3/4 miles



HOTFIELD WATERFALL

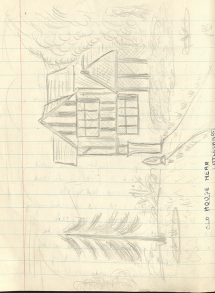
6/13
4:0 pm.

most newly shorn sheep, and we could then see Hotfield Lake in the distance glistening in the sunlight and to our South was a field of Rape ^{very high} but now came to two roads - one to the N.W. led to Hotfield and one the South leading to Great Chart. We took the one going to Hotfield and went down past a copse of trees and stood a bend over a bridge when we saw Hotfield water-fall - over which was a little wooden bridge. As the road began to go up we could see Hotfield Place to the S.W. On the opposite side of the road was a field in which were some bullocks which looked at us inquisitively over a strong chorn.

ledge, at the base of which grows
slender nettles. As we looked
to the South side of the road
we could groups of tall stately
trees but these were soon lost
to view as the road turned down
between high banks past an old
House which nestled among the
trees - This house was called
Stone farm - from here we
went up a slight incline until
we reached a fork in the road
where one road led to the
Maidstone road and the other - along
which we went led to Little
Chart. At the fork we saw the
gate of Holkfield place, and in the
field by it we saw a herd of
cows standing under the trees.

171.

4.30pm.



OLD MOOSE HORN
LITTLEBERRY

The gate house as we noticed had
 the date 1912 on it. Going farther
 up the road we found a young dead
 clump. To the South of us were
 a large copse of trees and to the
 North we could see groups of
 goose tracks. After passing a
 plantation of small trees we came
 to another fork in the Road. The
 road S led to Hortfield church and
 the one ^W which we went, led to the
 main road in a westerly direction.
 We went on past the "Forest Home"
 and over the door was the
 inscription:

W R

1834

As we continued down the road
 (secondary) the woods were on both

3 1/2 miles

Mid side of the road and consisted
mainly of cement or hatched pavement.
The road continued on past the
Horsfield Parish Women's Institute
(on our left) which was built of
corrugated iron.

Left car. Came to road turning
W to E - the E road led to Maidstone.
Took Quaker main road and the W
road along with to dishevel. We
took the W road which took us
past Post office and general store.
Following unimproved Post Office.

These schools were erected by

The Earl of Arden

1834

Red Telephone Booth outside Central
Store on South side - to the north
a field of sheep & cattle - unshorn

5:0 pm.
(at 5)

5:30 pm

Went along fuchsia - had tea. Walked
frog - moved along road after half hour
Dead Frog and Blackbird - second with
note up other side of road. Passed old
farm house on our left. Dog (spurred)
barked at us. George walked to side
house. - another dead bird found.
Mansion of "Gammie Tommils" is hill
called them - growing along side of road
- also passed Pound large above field
to the South - on other side was field
of corn. Post Office house. Nearby
repairs out-house - which had no Bill
said - been struck by lightning.
On S.W. side of road was field
of peas. Went down oval ^{stone} bridge, marked
black and white walls which flows
foot. Stone. We also entered a house
old with round topped - with windows

to note

- old parished church. Post Black
Hills - marked black & white. Stream
underneath - dried up - full of tall
reeds. Went under natural avenue
of trees. Avenue stopped - trees being
chopped down in field beyond - on east
side of road. Passed a nice wood and
a big garden. In 3 or 4 distance was
a wind Pump - road bend to right.
Slow down to look behind field of
corn. Passed another farmhouse with
round-topped windows. Passed a trout
cottage leading to Roaring Blows and
Down house. Passed old house with
beautiful windows and arch beams
(see drawings) - lovely garden in
front. Parking seen to north in
field - enclosed in big stone
hedge. Passed on S. side of road.

8-10
14.6.

another old house with round
topped windows also had iron
shaded oak door. Noticed another
of the round windowed houses on
opposite side of the road. Came
to Swinden Bridge - a park which
was enclosed in by a high brick
wall. A lady asked us if we had
lost our way! We told her we
had not but thanked her for her
kindness. Came to the Swamp Inn
at road junction. Road leading
S.W. to Blackby. Took road

6:40 pm.
(ref 7).

to Cherry. Went over Bridge under
which flowed 4th Stou. Came to
large grass triangle planted with flowers
(near mills).
Passed to the old factory - not
named and on past old timber
house. Opposite the side of road.

5 1/2 mls.

feet up was school and library
date 1874 - made of stone - on
fence - East side passed field of
wheat. Blackbird let us little way
up the road but flew off afterwards.
Stopped to inspect old house on
W side of road - square chimney
and stone bay windows - white
gate in front.

Came to large stone and iron
gate with lion cut in stone on
top of pillars. Gate was down to
Catshill Estate. Went along a
stretch of flat road. To E was
marshy field and fence back - a
wood. Sheep in field. Passed young
Black ^{gate} plantation on West side
Found pretty - but dead gold field
in road that was marshy road

running SE to N.W. to reach Charley
Flanking road. Passed more young brush
trees. Came to Flanking Charley road

7:35 pm
(189) Group of young pine by side of road
off on junction, and moved west to
West. Caught first and welcome sight
of Charley. and saw small wood to
East.

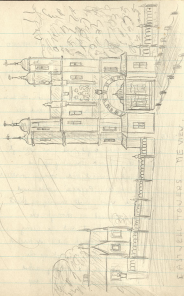
8 pm. Entered outskirts of Charley. Stopped
at shop - had some light
refreshment!. Pumping noises were
heard as we passed by the Copping
Coral Waterworks and we noticed
fine gardens round it. Next to it
we passed a Nursery (planned). Then
we came to a secondary road and
crossed over Charley railway bridge
(bricks with 3 arches). Looked
down on station which is on N.W.

side of Bridge - Railway is ASHFORD -
MANSFORD. West past Gas -
Electricity works. Passed old leaning
timbered house which as Bill
reminded was spoiled by the modern
chimney stack. We reached the
main road which we crossed and

8-15

entered the main street of Chisbury.
We turned right and went through
to the church. On way up we
passed several old cottages constructed
out of the "Palace" walls - and
which were built mainly of flint.
We continued on through the
quiet churchyard and so along
a small footpath until we reached
Post Place where we went up the
side entrance and possibly across
the Back where we could camp

8 1/2 miles



CASTLE TOWERS - VIEW

on his ground, which he ^{and} kindly
gave us permission to do, and we
went to the peak between two hills
up to our camp site.

9:0
(4.9)

We then pitched our tent - dug a
fireplace with our knife, carefully
placing turf on one side - lit a
fire, with wood we had collected
off the ground.

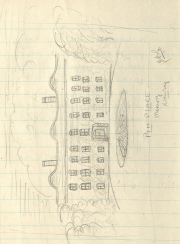
9 1/2 miles

We then cooked our supper (see page)
washed up and went to bed.

10:15

Asleep!

9 1/2 miles



Sunday June 11th.

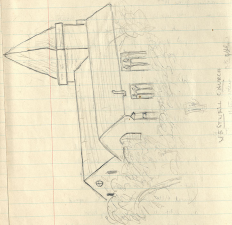
6:15 am. Woke up to find rain pouring down.
 (Thank heaven we slackened our gung
 ropes). Doesn't look as though we
 shall have a hot breakfast!

Got out some biscuits and ate them
 while filling up log.

8:20 am. Rain not stopped - worse if anything.
 Still new mud! Made rough + ready
 (as Bill called it) breakfast.

9 am.

Looks as though rain will last all
 day so decide to pack up and get
 on our way. so packed up - cleared
 tent - still wet. and ran down to
 General Pitts place where he signed
 our certificate. After checking him
 and looking in engine-room we waited
 for a while in a boat but soon continued
 on way - cleared up - rain stopped - 4 miles.



W.F. STURTELL
 11/15/1910

West of through avenue of trees -
 saw 2 houses in field, after
 being put by man at end of
 avenue turned sharp right along
 secondary road. Beach hills in
 South - been stopped down
 noticed rabbit in middle of
 road, ran out of our way.

To north saw a field of
 pines - about 600 inches high. Road
 was going about S.E. clay soil
 and recent rain had made the
 banks slippery. Taking the first
 turning North and then E. we came
 to where road ended and went
 on on Pilgrims Way. Instead
 of going along here we went up
 9-30 m. by the Cherry Quarry -
 (410) a huge 'bite' out of a cliff.



The Mill
Dorset

as it looked to us. Here we saw
a small gauge railway used for
carrying the lime to the machinery.
From here our route led us through
the dripping woods and we could
not help asking how fresh the
foliage looked. The overhanging
branches made a wet tunnel for
us to go through. The trees were
not of any special kind and in
some places the ground was covered
with dense undergrowth. Our path
now ran in an easterly direction
but at the next "junction" we
took the track going south.
A massive forked tree had blown
over our path and when coming
we had had down to enable us
to get under it. The path now



HOUSE HINGO COURT
1944

between two high banks and as
the morning comes were so dark we
climbed up and walked along one
of the banks. The things that attract
us most here were the very tall
trees with branches generally not
lower than 20 ft. The loose stumps
where trees had been recently cut
were unfortunately full as though
they were standing.

Some winged fly across pond, which
will run S.E.

Walked under pulled tree covered
with ivy.

Some came back on to Pilgrims
Way - where we wanted to write

10:30 am
(p. 11).

by. Heard bells of Westwell
church - ate chocolate - found
some ripe strawberry - ate also!

Saw Walpole church in distance looking
very black. And nearer to us was
Westwell. Started walking again until
Reached 2nd class road from Paddock
- valley on Roston to Margate road.
At corner was Down Street House
with some old photographs, in its
front yard - pipe in sky. Opposite
this was a concrete pond containing
very dirty water and no frog
which Bill kindly fished out.
Continued - turned S. down steep
hill to Westwell - high banks.
Turned E. at bottom by a corrugated
iron shed. Could see Westwell
church - which we draw - over the
top of an orchard. Came to hut
built of wood with well in
front on right side of road. Turned

Turned west at 8 in road to get
view + dressing of water mill, went
back in SE direction and found dead
Spacious hawk in road, which was
lined with beechnut hedges. Round
road where we stopped - opposite a
seed trial ground - in a field for distance

1:0 pm

went to write log - then ^{to find to see special case - measured} questioned as about how on water table
Proceeded in ESE direction.

Saw + heard Pheasant - noted type
of feathers which showed only on
head when landed. In wood about corn
field - 2' high and also pen - 6' high
above field to south

2:0 pm.

At bend on Thimbledown hill saw
orchard + farm with lower cattle.
Bend to South also last again.
Woodland on N side of road - mixed.
Noticed in S a line of trees (old).

50 pm.
of 13.

running from N. S. - about 1/2 mi. long.
Went by Eastwell country farm on South
side with field ready cut for hay.
found in road to E with high bank on
W. side. This led back to beginning
of Kennington and Eastwell lanes - (see
above). Continued on past Eastwell
lans - bore SE through Kennington
by Kennington Women's Institute, the
name was carried in on quite oak
beams of the building. Came pass
Ashtons rugby - football club
ground. Went along main road until
Somerset field was reached, walked
through it on the Public foot-path -
Saw people playing Tennis. Stopped
to write up log then continued along
back of Amesbury. to Queen Road.
by Headly's Printing Works - turned

14 1/2 miles

Log quite good. Don't forget
the BLOCK CAPITALS.

Direction, observation & notes
rather good.

Route trap good. It is customary
to note places leading off the
map on the N and W margins
as "From" and on S and E as
"To". Sorry you could not
catch the snakes & eggs. It
is possible to get a fine young
in rain if you board up
dry sticks overnight.

Prepared for
First Glass Journey

14/6/79.

RHS
ADC
Revised.

E. down path at back of High
Street. - came out into Myrtle road
over East Stow bridge. Continued
up Myrtle Road until East Stow
garage was reached.

1.30 pm.
(14).

206 ~~RHS~~

17 1/2 mls.

Thurs

Saturday

Tea 1. Bread + butter - jam, cake, apple.

Supper 1. Sausage + mashed potatoes - cocoa - biscuits.

Sunday

Breakfast

Apple, Porridge, Eggs - tea

Bread - jam

Dinner

Pressed beef - lettuce + tomato salad

bread - butter - jam

Food Quantities (batches)

(These marked * were not used as no breakfast could be cooked because of rain)

Bread - 1 lb.

4 apples

* Porridge for 2

Cakes

jam - small pot

3 tomatoes

* 2 Bacon

* 2 Eggs

A little salt

+ - lard

* Tea - 2 demitasse cups

Cocoa

* potatoes

+ sausage

1 lettuce

4 eggs + 1/2 lb butter

1/2 pint milk

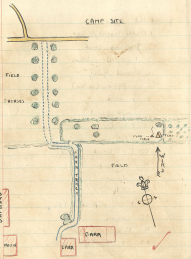
PERSONAL EQUIPMENT

1. Raincoat
2. 2 Blankets (or sleeping bags)
3. Blanket pins (6)
4. Spare clothing
 - shirts } for sleeping suit
 - socks }
5. Raincoat
6. Plasters
7. Soap
- Flannel } in water
- Woolblend } proof
- 1 pair } bag.
8. Tent
9. 2 plates (enamel) & Mug.
- Knife } in holdall.
- Fork }
- Spoon }
10. Spoon
11. Comb.

General Kit:

1. Rubber mallet /o tent.
2. 1 ground sheet.
3. 1 fibrewill canvas.
4. Small trolley.
5. Soapstone (in tin)
6. Firelock
7. Length of cord
8. 1 candle
9. Tent air cone
10. Boot brush & polish
11. Horsehair
12. Compass
13. Hatchet
14. 1" O.S. map sheet 126
15. Crayons.
16. Ruber.
17. Adhesive paper & rubber

CAMP 302



1900

1900

CAMP 302

1900

